

# A Basic Guide To: Kega Fusion 3.61

Kega Fusion (or just Fusion for short) is a popular and fully featured Sega home console emulator, and is the preferred emulator for the TigerTails Radio Retro Gaming challenges due to it's high emulation quality (rather than fancy bells and whistles). This document serves as a small guide for someone who has never used an emulator before, as the basics of loading games and configuring the controls are detailed here. More advanced information can be found in the README file that comes with Fusion.

This guide assumes that you have downloaded the zip file for Fusion, and have unzipped it already. If you haven't, go do so now. It doesn't matter where you unzip it to, though you might want to put it somewhere you can find it again and won't have to move it.

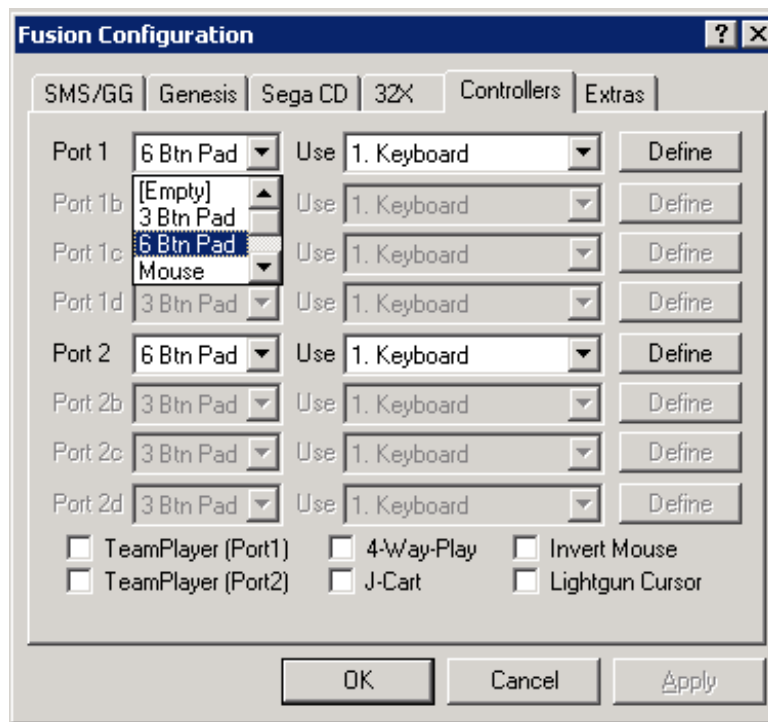
Right, done that? Good. Now, before you go playing some games, you need to do some initial set up. All being well, you only need to do with once so you might as well get it out of the way first. Firstly we need to get the controls sorted out.

Fusion can be set to emulate both the 3 button and the 6 button controllers, and as a good number of games have 6 button support it's worth configuring Fusion as such.



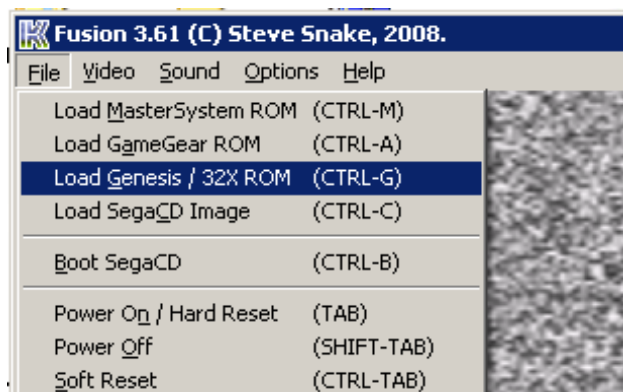
On the left is the “D-Pad” containing the directional buttons. On the right is the normal ABC buttons used by all games, and the extra XYZ buttons used by games supporting 6 button controllers. START is in blue and MODE (used to fake 3 button mode if a game was upset by the 6 buttons) in black beside it. Due to the arrow keys on your keyboard being on the right, most gamers who use the keyboard prefer to have the “D-Pad” on the right, and ABCXYZ on the right. Those that don't often use the WASD keys for up, left, down, and right. Some players also find using the Enter key as START helps make the game feel like a PC game. Feel free to find a keyboard layout that suits you.

Once you have decided what button ought to be what, open Fusion (*the very first time you open Fusion, you will see a “Tips Box”*. It looks a lot like an error, but it's not – just click OK and it will go away) and click on “Options” and then “Set Config...”. Don't worry about what you see, we'll come to all that much later on. For now, find the “Controllers” tab, and give it a click.



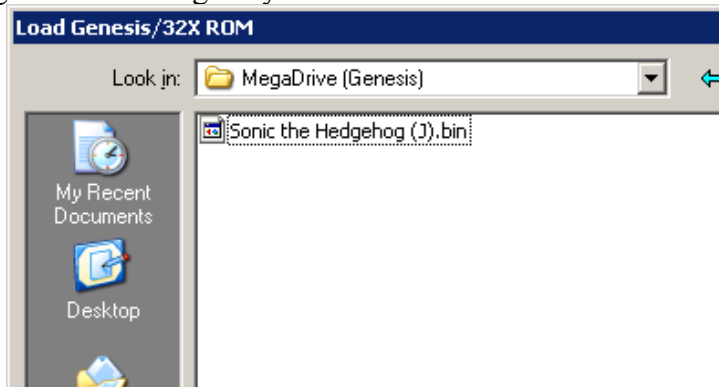
Port 1 is the Player 1 side of the Megadrive/Genesis and Port 2 is for Player 2. Use the Drop-Down menu seen to select 6 button pads for each player. If you have a PC joystick and you don't want to use the keyboard, you can select other options from the "Use" box. Once you're happy, hit the "Define" buttons and follow the instructions that appear in the area just above the OK button. Once that's done, you can be glad that the first task is over. At the most basic level, you're now ready to play some games!

This is where the fun starts. Since the challenges using this emulator will mostly be Megadrive (Genesis) based, this guide will use a Megadrive game for the examples.



When you are using an emulator, the games you play are normally called ROMs instead of games. They are copies (dumps) of the original **Read Only Memory** chips on the game cartridge (or CD). So, when you see an option to load a ROM, it's talking about the games. In this example, a Megadrive game is being loaded (Genesis if you're American).

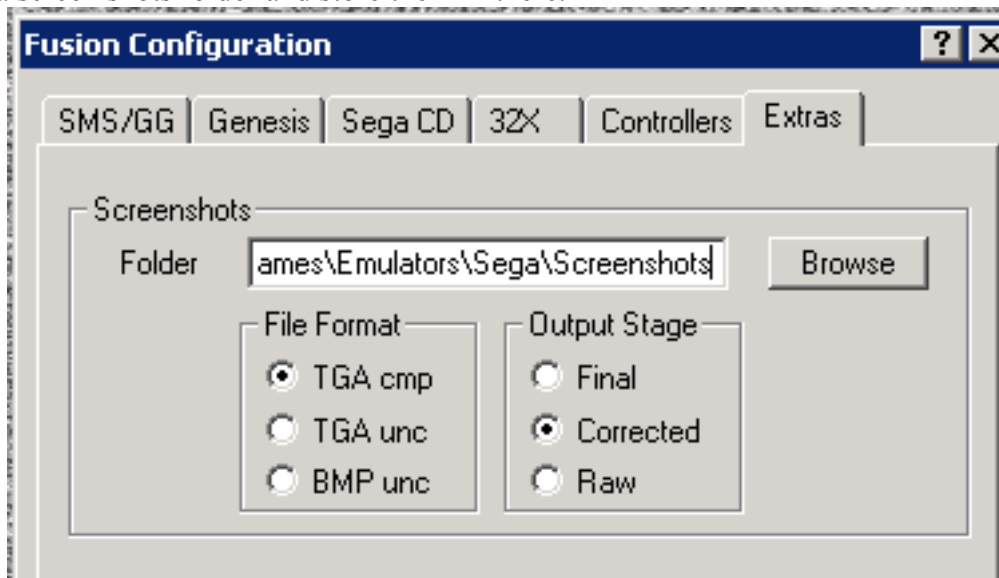
If you downloaded Fusion (and indeed this guide) after TigerTails Radio Retro Gaming Challenge 4 (MUSHA), double-click on ROMs, and then on MegaDrive (Genesis). You should find the first Sonic the Hedgehog game sat waiting for you.



Double click on it, and start playing Sonic the Hedgehog. Congratulations, you can now load games, and play them with the controls of your choice. Well done.

Just a couple of things you need to remember now. Fusion can play games from inside .zip files. For each new challenge, the game will be downloaded in .zip format, so you can download straight to your ROMs folder and Fusion will play it. Don't forget to put the game into the correct console folder, otherwise things get a touch messy over time.

Finally, for the challenges, you will need to take screen shots. These are easy to make. Simply hold the left SHIFT key and press F12. By default they will save in the same folder as Fusion, but you can make a screen shots folder and store them in there.



The Extras tab on the Configuration screen lets you choose where to save screen shots, and in what format. The File Format and Output Stage options show here are the best for submitting entries for the challenges.

For those wanting to play the Master System Snail Game, or any MegaCD (SegaCD) game, you'll need to add the BIOS files to Fusion. All BIOS files are included in the package and you only need to tell Fusion where they are using the appropriate tab on the Configuration screen.

If you need more information about Fusion, feel free to ask via email, using the email address on the Contact page of the TigerTails Radio website, or you can ask in IRC during the show. Now get out there and start playing some games!